



**FreeHoist** ∞

- Classic modeling design
- The body adopts aviation aluminum for heat dissipation and light weight



CAST OFF  
SHACKLES

---

Mode digital motor with fine grinding noise reduction gear

Digital motors solve constant torque low calorific speed control accurately

Noise reduction gear adopts high precision grinding process



CAST OFF SHACKLES

---

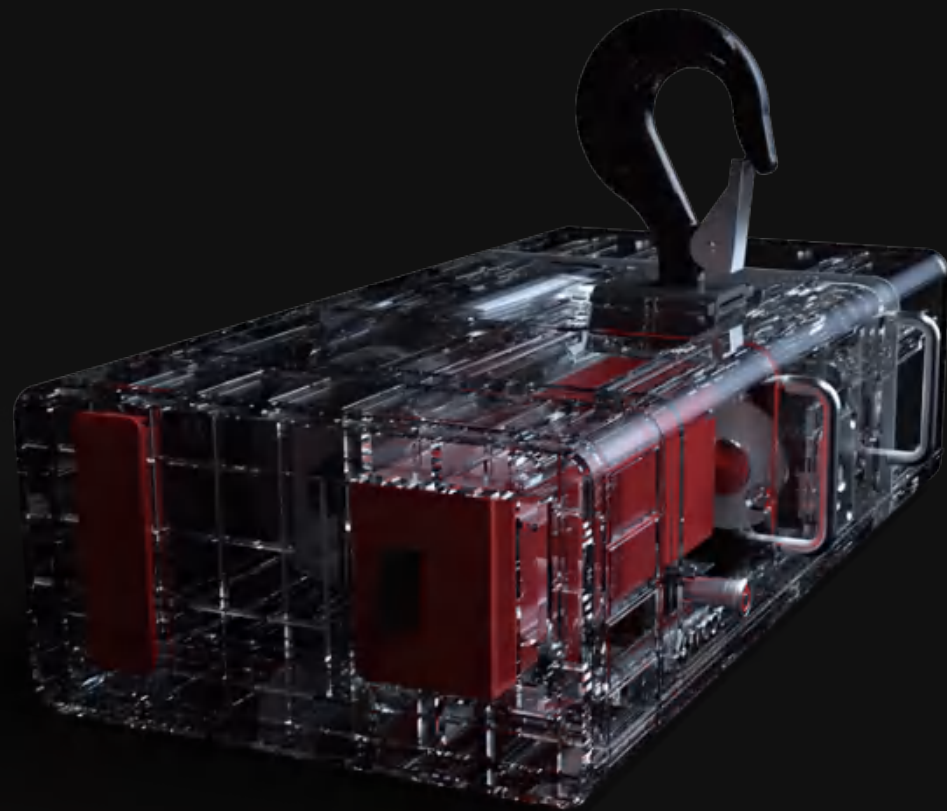
5000mAh  
Battery capacity

168Hours  
Standby time

29kg  
Net weight

# Super strong endurance

Adopt 5000mAh large capacity battery



## Mode energy block

A single energy block can support the FREE load of 800KG under the condition of 60 meters round trip. Independent research and development of Mode energy management system, with charge and discharge protection, undervoltage, over current, over discharge, short circuit, high temperature and low temperature active protection function.

EXCELLENT PERFORMANCE



Stop when  
release handle



Manual release



8 protections





# Industry pain points

The messy venue

Building the site takes much time and labor

Security risks exist



## Wireless hoist = unlimited value

The real wireless hoist is on its way

In the future, it will give us more leisure, free labor and shorten construction time

Save construction cost and personnel cost



# APP control Control multiple devices with one click

Free to group, rise and fall together



Large range,  
unconstrained



The built-in tutorials are  
easy to understand



Accessories to meet  
different needs

# Product Parameters

Appearance Material : Aviation Aluminum Alloy

Body Size : 510x140x257(mm)

Battery Capacity : 5000mAh

Battery Specification : 36V/180Wh

Body Weight : 29kg

Safety Factor : 7:1

Load Rating : 1000kg

Rising Speed : 3.5m/min

Falling Speed : 2m/min

Chain Length : 20m (Other Length Optional)

Chain Breaking Force : 7.2 times

Limit : Top/Bottom Electronic Limit

Noise : 53DB

Brakes : Maintenance-free Electromagnetic Brakes

Protection Grade : IP65

The Standby Time : 168 Hours

800kg Battery Life : 144m(Round Trip)

WIFI : Standard

Wireless Frequency Band : 2.4 GHz