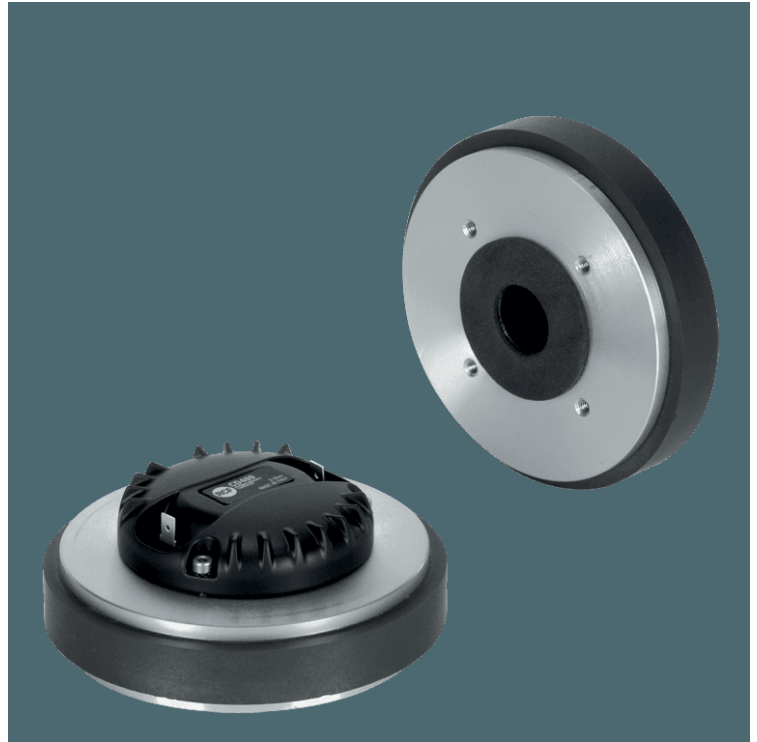


CD400

DRIVER

DESCRIPTION

The CD400 is a high performance 1.75-inch diaphragm ceramic compression driver with a 1.0 inch exit throat. The diaphragm is precision formed from polyester. The voice coil assembly is designed using high temperature Kapton former, rectangular profile copper clad aluminum wire and assembled using advanced, specially formulated adhesives.



FEATURES

- 1.75-inch Diaphragm, 1.0-inch Exit Throat / Polyester Compression Driver
- 100W continuous program power handling
- Frequency range: 1200Hz - 20kHz
- 2-slot optimized geometry phase plug
- Polyester diaphragm
- Vented suspension system
- Ceramic magnet assembly

TECHNICAL SPECIFICATIONS

General specifications

Exit Throat Diameter:	1.0 inch / 25 mm
Related Impedance:	8 ohm
Program Power (watt):	100 W
Power handling capacity (watt):	50 W
Sensitivity:	109 dB
Frequency range:	1200 - 20000 Hz
Diaphragm Material:	Polyester
Suspension Material:	Polyester
Suspension Design:	Flat
Minimum Impedance (ohm):	6.50 ohm
Voice Coil Diameter:	1.75 inch / 44 mm
Voice Coil Material:	Edgewound Aluminium
Voice Coil Former Design:	Straight - Kapton
Number of layers:	1
Kind of layers:	outside
Flux Density:	1.8 T
Phase Plug Design:	2 slot
Phase Plug Material:	PP Composite
Magnetics:	Ceramic

Thiele - small parameters

Bl factor (Bl) (T x m):	7.50 T x m
-------------------------	------------

Mounting informations

Overall diameter:	134 mm / 5.28 inches
Overall height:	52 mm / 2.05 inches
Mounting:	4 x 6 mm threaded holes at 90°

Standard compliance

CE marking:	Yes
-------------	-----

Size

Weight:	2.46 kg / 5.42 lbs
---------	--------------------

Shipping informations

Package Height:	88 mm / 3.46 inches
Package Width:	172 mm / 6.77 inches
Package Depth:	196 mm / 7.72 inches
Package Weight:	2.63 kg / 5.8 lbs

PART NUMBER

- **15129047**

CD400

8ohm

