

ZM 2100

6 ZONES PREAMPLIFIED MASTER UNIT

DESCRIPTION

ZM 2100 is the ZM 2000 system master unit that includes a preamplifier with 6 zones selection without internal amplifier. It is based on a dual bus architecture, where the first bus is mainly dedicated for selective / all-call paging, while the second bus is for music distribution (or other signals). Toggle buttons turn on / off the second bus (music) on each zone and logic inputs / outputs (GPI / GPO) are available to interface the system with other devices. ZM 2100 allows to choose either a power-sharing configuration by using one or two external amplifiers (the second is needed to keep music in zones not paged) for all the 6 zones or to use an amplifier (or more) for each zone. It has input connectors for audio sources, can manage priority and route the two buses to the system zones.



FEATURES

- Dual-bus system architecture
- Selectable inputs priority
- Link up to 8 ZE 2200 zone expansions
- 24 V DC secondary power supply
- Dedicated paging input (up to 6 BM 2006)
- Emergency audio input
- 2 external amplifier inputs
- Selectable chime generator
- Dedicated wall mount remote control

TECHNICAL SPECIFICATIONS

System specifications	Number of zones managed:	54
	Max number of consoles:	6
	Number of console buses:	1
	Max number of units connectable:	9
	Communication bus:	Serial
	Connection Cables:	FTP CAT 5
Amplifier specifications	Number of channels:	6
	Power output (@ 100 V):	240 W RMS
	Frequency Response (-3dB):	50 Hz ÷ 20 kHz
	Signal/noise rate ("A" weighted)	>75 dB
	Distortion (THD+N) @ 1 kHz nominal power:	<1 %
Input section	Total number of inputs:	9
	Balanced:	6
	Unbalanced:	3
	Mono:	6
	Stereo:	3
	Mic inputs:	2
	Mic connectors:	XLR
	Mic Phantom:	17.5 V DC
	Line inputs:	2
	Line connectors:	RCA
	Mic+Line inputs:	2
	Mic+Line connectors:	XLR
	Mic+Line Phantom:	17.5 V DC
	Paging inputs:	3
	Paging connectors:	RCA, RJ45
	Paging command:	Contact
	General Purpose Inputs (GPI):	10
Programmable GPI:	Yes	
Output section	Signal output number:	2
	Signal output connectors:	XLR
	Power output connectors:	Euroblock
	General Purpose Outputs (GPO):	10
Processing	Tone controls:	Yes
Controls	Configuration:	Front panel
	Priority:	Yes
	Music on hold:	Yes
	Chime tone:	Yes
Protections	Cooling:	Convection



Power requirement	Operating voltage:	220-240/115 V- 50/60HzV ~ Hz
	Voltage selection:	External
	DC power:	Yes
	DC power value:	24 V
	Power consumption (MAX):	100 W

Standard compliance	CE marking:	Yes
----------------------------	-------------	-----

Physical specifications	Cabinet/Case Material:	Metal
	Rack mounting:	19", 3U

Size	Height:	133 mm / 5.24 inches
	Width:	430 mm / 16.93 inches
	Depth:	365 mm / 14.37 inches
	Weight:	8.2 kg / 18.08 lbs

Shipping informations	Package Height:	296 mm / 11.65 inches
	Package Width:	580 mm / 22.83 inches
	Package Depth:	490 mm / 19.29 inches
	Package Weight:	10.6 kg / 23.37 lbs

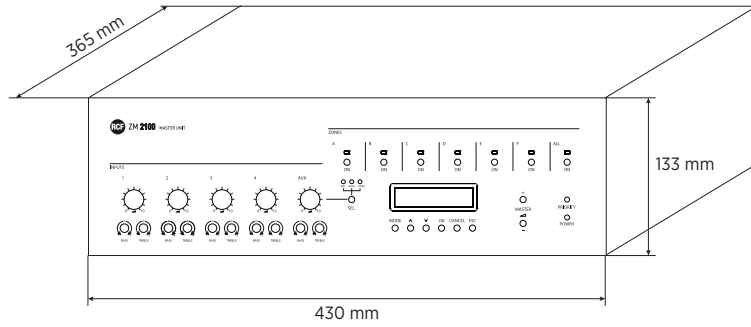
PART NUMBER

- **17170166**

ZM 2100

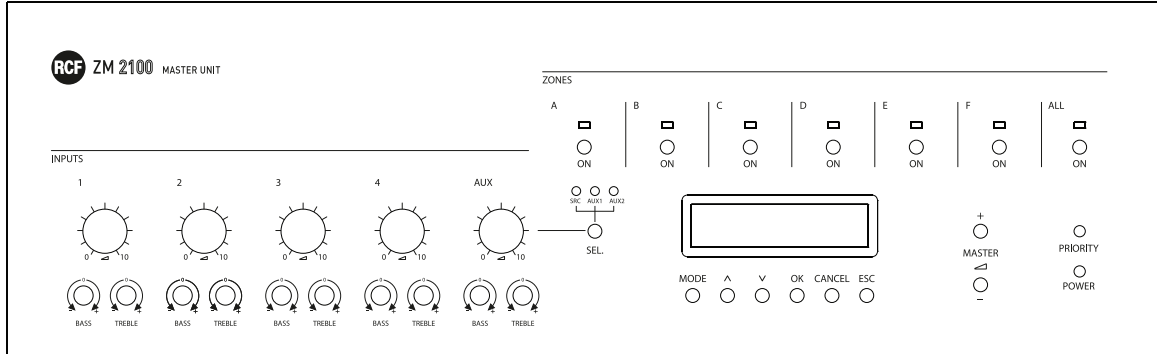
EAN 8024530010249

DRAWINGS

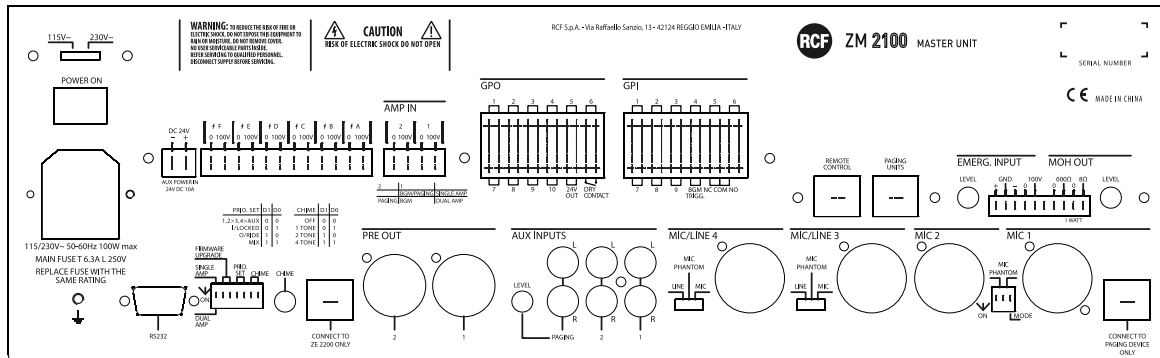


PANELS

Front panel



Rear panel





ACCESSORIES